



# Couplings for Cranes

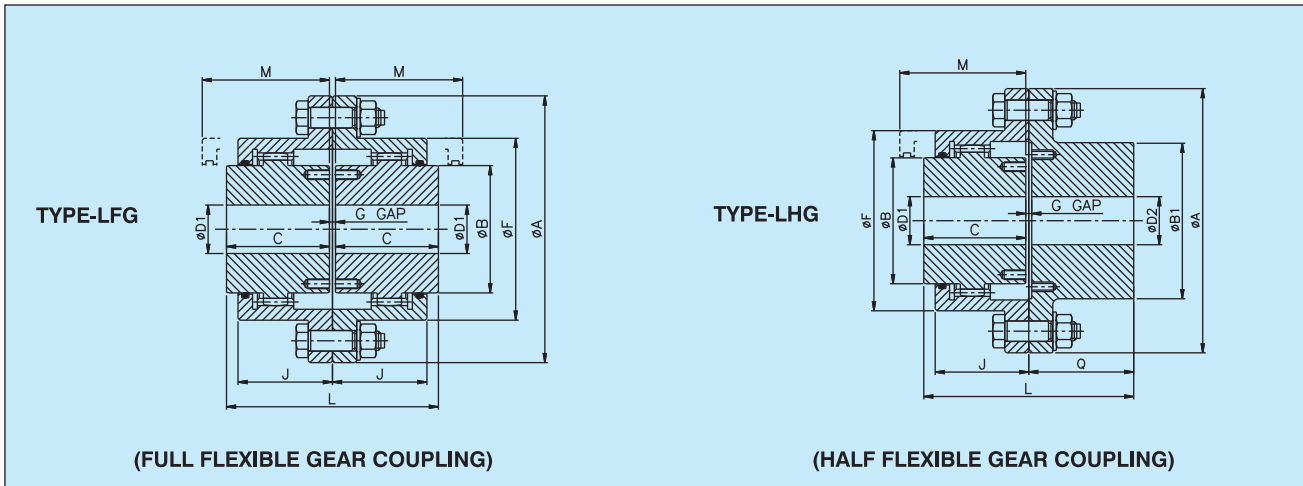
## **F** E A T U R E S

- Compact Assembly
- Larger Bore Capacities
- High Power To Weight Ratio
- Accommodates Angular, Parallel & Axial Misalignments
- Extensively used for cross traverse and long travel line shaft drives.

## **A** P P L I C A T I O N   A R E A S

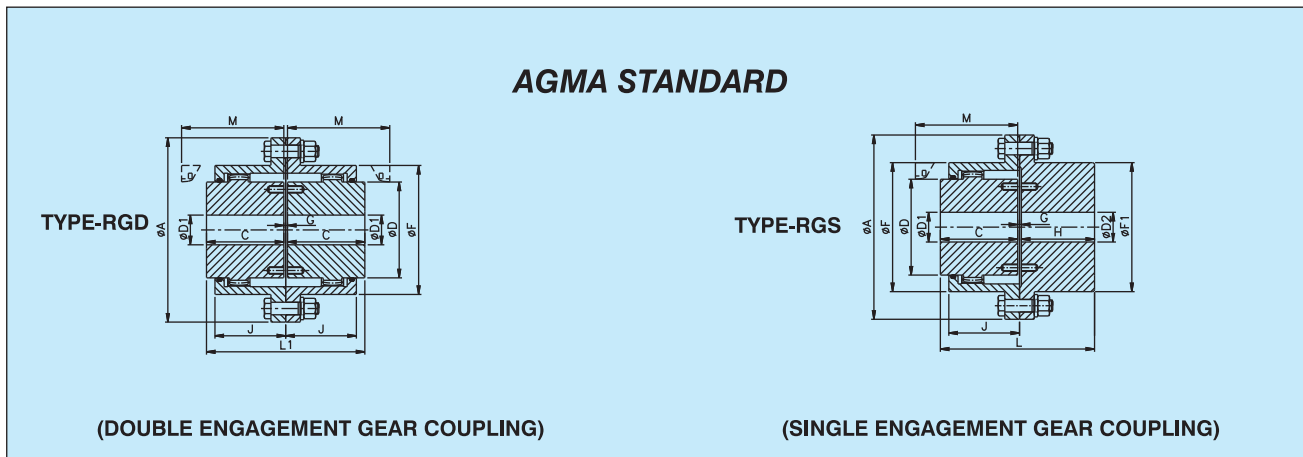
- Steel Mill
- Sugar Mill
- Paper Mill
- Power Plants
- Cement Mill
- Construction Projects





### TECHNICAL DATA - TYPE LFG / LHG

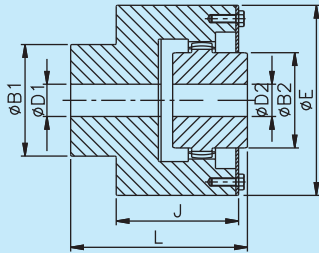
Coupling Size	Coupling Rating		Max. Speed rpm	Bore			ØA	ØB	ØB1	C	ØF	G	J	L	M	Q	Weight in kg.	
	kW at 100 RPM	Rated Torque Nm		Min	Max												LFG	LHG
					D1	D2												
100	5.2	497	7600	10	35	45	120	50	65	45	75	3	39.5	93	55	46.5	4.2	4.2
101	10.5	1002	6300	20	50	60	170	65	85	55	110	5	49.0	115	65	57.5	11.0	11.0
102	26.1	2492	5000	30	60	75	185	85	110	70	125	5	62.0	145	80	72.5	15.0	15.0
103	47	4486	4000	40	75	90	220	105	130	85	150	5	78.0	175	105	87.5	20.0	25.0
104	89	8495	3350	50	90	110	250	130	160	105	175	5	96.0	215	125	107.5	39.0	40.0
105	136	12982	2800	60	110	130	290	155	185	110	200	10	106.0	230	140	115.0	57.0	60.0
106	209	19950	2500	75	125	150	320	175	215	125	230	10	117.0	260	155	130.0	80.0	85.0
107	366	34936	2100	90	140	170	350	205	240	140	260	10	134.0	290	175	145.0	103.0	106.0
108	470	44864	1900	105	160	200	380	230	285	155	290	10	147.0	320	190	160.0	138.0	149.0
109	585	55841	1700	125	180	220	430	250	315	165	330	10	156.0	340	205	170.0	170.0	210.0
110	856	81709	1400	140	220	260	490	310	370	180	390	10	171.0	370	220	185.0	264.0	271.0



### TECHNICAL DATA - TYPE RGD / RGS

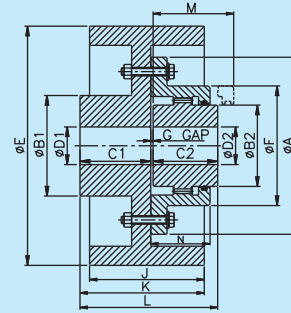
Coupling Size	Coupling Rating		Max. Speed rpm	Bore (Flex Hub)		Bore (Rigid Hub)		ØA	C	ØD	ØF	ØF1	Gap (G)		H	J	L	L1	M	Wt. in kg.	
	kW at 100 RPM	Rated Torque Nm		Min	Max	Min	Max						RGD	RGS							
																				RGD	RGS
10	12.5	1200	8000	14	52	18	60	116	43	69	84	84	3	4	40	39	87	89	51	4.4	4.5
15	26.1	2500	6500	22	65	26	80	152	50	86	105	107	3	4	47	48	101	103	61	9.0	9.5
20	52.1	5000	5600	27	80	30	90	178	62	105	127	130	3	4	59	60	125	127	76	15.0	15.5
25	90.7	8700	5000	32	98	37	110	213	77	131	155	157	5	5	74	72	156	159	92	27.0	27.5
30	134.4	12900	4400	42	115	44	130	240	91	152	181	182	5	5	88	84	184	187	106	40.0	41.5
35	202.2	19400	3900	47	135	52	150	279	107	178	211	212	6	6	102	98	215	220	130	65.0	67.0
40	317.9	30500	3600	47	160	52	180	318	121	210	250	250	6	8	116	111	245	248	145	96.0	100.0
45	435.6	41800	3200	52	180	57	200	346	135	235	274	276	8	8	131	123	274	278	165	131.0	135.0
50	594.0	57000	2900	72	195	77	220	389	153	254	306	309	8	9	148	141	310	314	183	186.0	195.0
55	844.1	81000	2650	72	215	77	240	425	168	279	334	334	8	9	173	158	350	344	203	247.0	261.0
60	990.0	95000	2450	77	235	82	260	457	188	305	366	366	8	9.5	187	169	385	384	228	299.0	316.0
70	1531.0	147000	2150	92	280	102	300	527	221	356	425	425	9	11	220	196	452	451	266	473.0	500.0

TYPE-LHGID



(GEAR COUPLING WITH INTEGRAL DRUM)

TYPE-LHGBD



(GEAR COUPLING WITH BOLTED DRUM)

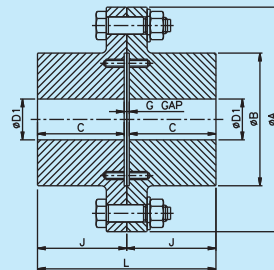
### TECHNICAL DATA - TYPE LHGID

Coupling Size	Coupling Rating		Max. Speed rpm	Bore (D1)		ØE	ØB1	ØB2	J	L	Weight in kg.
	kW at 100 RPM	Rated Torque Nm		Min	Max						
4" x 2.75"	10.27	981	8000	12	45	100.0	80	65	77	105.5	10
5.5" x 3.75"	10.27	981	6300	17	45	139.5	80	70	101	137.0	19
6" x 3.5"	25.67	2452	6300	17	45	150.0	80	70	97	133.5	22
7" x 3.75"	46.22	4414	5000	21	50	177.8	90	85	101.6	137.0	33
8" x 3.75"	87.32	8338.5	4000	20	70	200.0	120	120	104.5	137.0	47
10" x 4.7"	205.46	19620	3350	25	80	254.0	140	155	129.5	159.5	82

### TECHNICAL DATA - TYPE LHGBD

Coupling Size	Coupling Rating		Max. Speed rpm	Bore			ØA	ØB1	ØB2	C1	C2	ØE	ØF	G	J	K	L	M	N	Weight Kg.
	kW at 100 rpm	Rated Torque (Nm)		Min.	D1	Max. D2														
100	5.2	497	7600	10	40	30	120	65	50	63.5	45	150	75	1.5	80	95	110	55	39.5	11.5
100A	5.2	497	7600	10	45	35	120	70	50	73.5	45	160	75	1.5	90	110	120	55	39.5	13.7
101	10.5	1002	6300	20	55	45	170	90	65	76.5	55	200	110	2.5	100	120	134	65	49.0	23.5
101A	10.5	1002	6300	20	65	45	170	105	65	76.5	55	250	110	2.5	120	130	134	65	49.0	34.2
102	26.1	2492	5000	30	65	55	185	105	85	76.5	70	250	125	2.5	120	130	149	80	62.0	41.0
103	47	4486	4000	40	80	70	220	130	105	104.5	85	300	150	2.5	150	170	192	105	78.0	64.5
104	89	8495	3350	50	85	85	250	130	130	104.5	105	300	175	2.5	150	170	212	125	96.0	72
104A	89	8495	3350	50	85	85	250	135	130	110.5	105	375	175	2.5	165	185	218	125	96.0	140
104B	89	8495	3350	50	95	85	250	150	130	117.5	105	400	175	2.5	180	210	225	125	96.0	150
105	136	12982	2800	60	105	105	290	150	155	115.0	110	400	200	5.0	180	210	230	140	106.0	160
105A	136	12982	2800	60	150	105	290	170	155	120.0	110	450	200	5.0	200	220	235	140	106.0	178
106	209	19950	2500	75	130	120	320	210	175	145.0	125	500	230	5.0	225	340	275	155	117.0	225

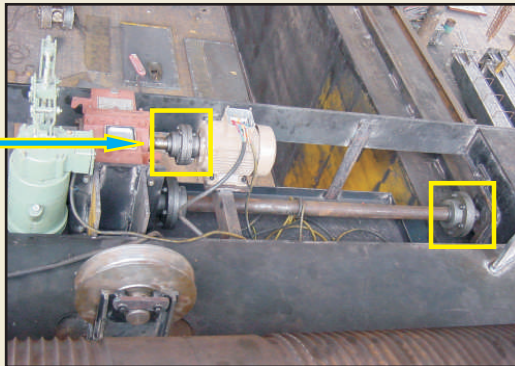
TYPE-RGR  
(RIGID COUPLING)



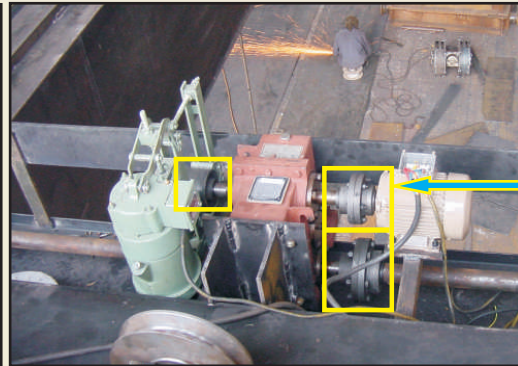
### TECHNICAL DATA - TYPE RGR

Coupling Size	Coupling Rating		Max. Speed rpm	Bore (D1)		ØA	ØB	C	G	J	L	Weight in kg.
	kW at 100 RPM	Rated Torque Nm		Min	Max							
RGR 100	5.2	497	7600	10	45	120	65	45	3	46.5	93	4.2
RGR 101	10.5	1002	6300	21	60	170	85	55	5	57.5	115	9.8
RGR 102	26.1	2492	5000	30	75	185	110	70	5	72.5	145	15.4
RGR 103	47	4486	4000	40	90	220	130	85	5	87.5	175	26.0
RGR 104	89	8495	3350	50	110	250	160	105	5	107.5	215	43.2
RGR 105	136	12982	2800	60	130	290	185	110	10	115.0	230	64.0
RGR 106	209	19950	2500	75	150	320	215	125	10	130.0	260	91.4
RGR 107	366	34936	2100	90	170	350	240	140	10	145.0	290	123.0
RGR 108	470	44864	1900	105	200	380	285	155	10	160.0	320	179.6
RGR 109	585	55841	1700	125	220	430	315	165	10	170.0	340	236.6
RGR 110	856	81709	1400	140	260	490	370	180	10	185.0	370	346.6

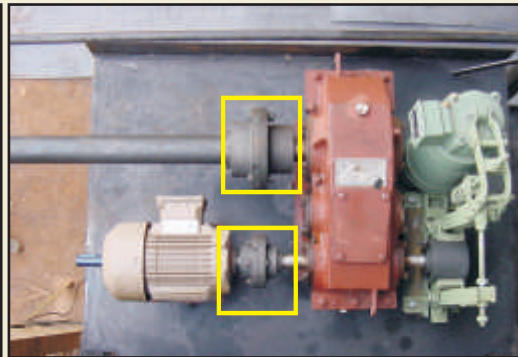
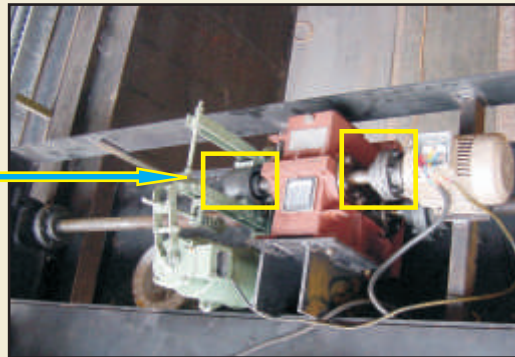
Full Gear Coupling



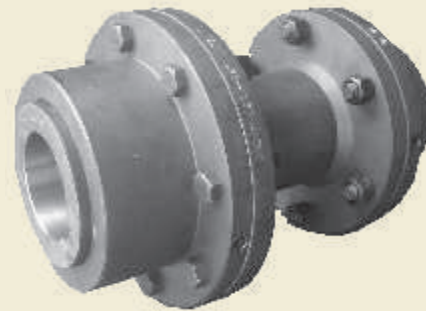
Half Gear Coupling



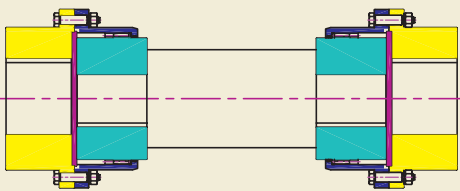
Break Drum Coupling



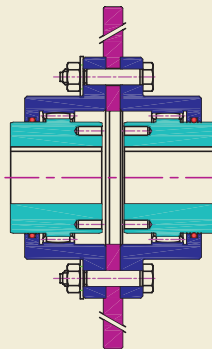
GEAR BRAKE DRUM COUPLING



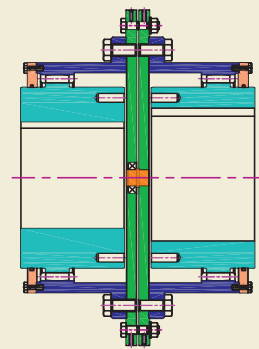
SPACER GEAR COUPLING



FLOATING SHAFT GEAR COUPLING



DISK BREAK GEAR COUPLING



SHEAR PIN GEAR COUPLING

**Note :-**

- In view of our constant endeavour to improve quality of our products, we reserve the right to alter or change specifications without prior notice.
- This document is the intellectual property of Rathi Transpower Pvt. Ltd. and subject to copyright.

ISO 9001  
BUREAU VERITAS  
Certification



**Rathi Transpower Pvt Ltd**

Rathi Chambers, 7, Deccan College Road,  
Pune 411 006.  
Phone : 91-20-30517201  
Fax : 91-20-30517212  
E-mail : enquiry@rathigroup.com  
Website : www.rathicouplings.com