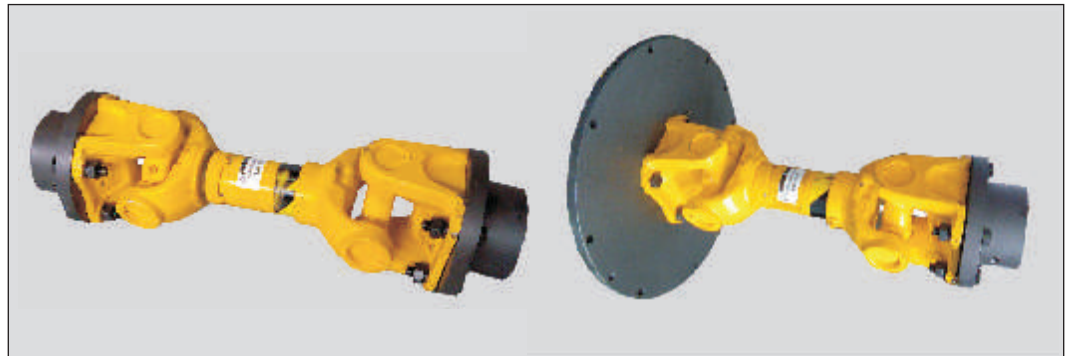


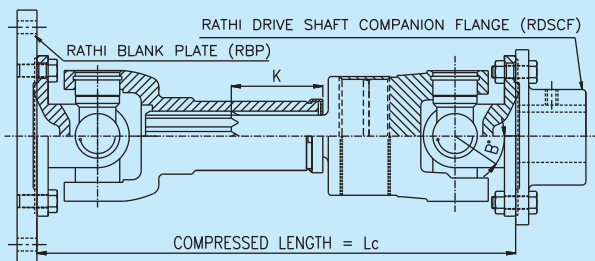
FEATURES:

- Easy in Installation
- Length Compensation
- Highly Efficient
- Low Maintenance

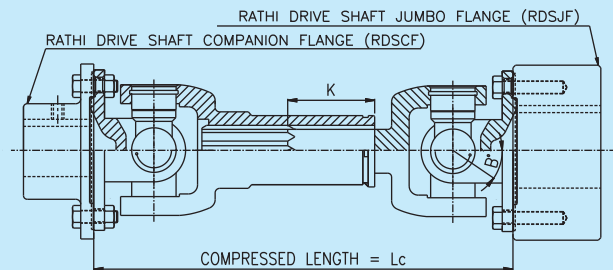


TECHNICAL DATA

TUBULAR DRIVE SHAFT



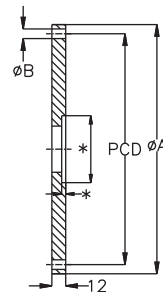
SUPER SHORT DRIVE SHAFT



RATHI DRIVE SHAFT COUPLING (RDC)

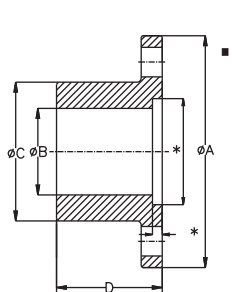
RDC Size	Angle B (Max.)	Slip Movement K	Compressed Length (LC)		PCD of holes	Hole Dia
			Min.	Max.		
1140●	14°	43	260	2500	69.9	8
1260● / 1310●	20°	50	335	2500	79.4	9.9
1350■ / 1410■	18°	57	356	2500	95.3	11.2
1510● / 1550■	18°	60	464/425	2500	120.7	12.8
1600●	20°	70	533	2500	155.5	9.8
1700●	25°	95	585	2500	184	10.5
1800●	25°	105	602	2500	184	10.5
1850●	25°	105	602	2500	205	12.2

RATHI BLANK PLATE (RBP) - SAE STD.



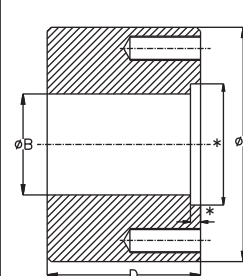
RBP Size	ØA	ØB	PCD	No. of Holes
RBP - 6 1/2"	8 1/2"	21/64"	7 7/8"	6
RBP - 7 1/2"	9 1/2"	21/64"	8 3/4"	8
RBP - 8"	10 3/8"	13/32"	9 5/8"	6
RBP - 10"	12 3/8"	13/32"	11 5/8"	8
RBP - 11 1/2"	13 7/8"	13/32"	13 1/8"	8
RBP - 14"	18 3/8"	17/32"	17 1/4"	8

RATHI DRIVE SHAFT COMPANION FLANGE (RDSCF)



RDSCF Size	ØA	ØB	Max. Bore B	D
1140●	88	51	30	41
1260● / 1310●	97	60	38	48
1350■ / 1410■	125	72	42	48
1510● / 1550■	150	94	55	61
1600●	175	130	75	76
1700●	203	142	80	88
1800●	203	142	80	88
1850●	227	160	90	100

RATHI DRIVE SHAFT JUMBO FLANGE (RDSJF)

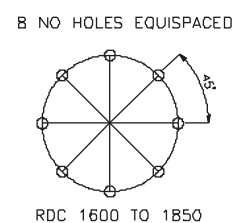
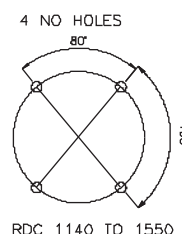


RDSJF Size	ØA	Max. Bore B	D
1140●	88	55	50
1260● / 1310●	97	60	63
1350■ / 1410■	125	70	76
1510● / 1550■	150	95	100
1600●	175	114	127
1700●	203	140	152
1800●	203	140	152
1850●	227	150	160

- * Dimensions to suit respective drive shaft
 ● Round Flange ■ Rectangular Flange
 All Dimensions are in mm otherwise specified

APPLICATIONS :-

Steel Plants & Rolling Mills, Textile, Paper & Printing Machinery, Cranes & Pump drive, Vibrating screens, Cement Industries, Earth Moving Equipments, etc.



SELECTION DATA

SELECTION PROCEDURE:-

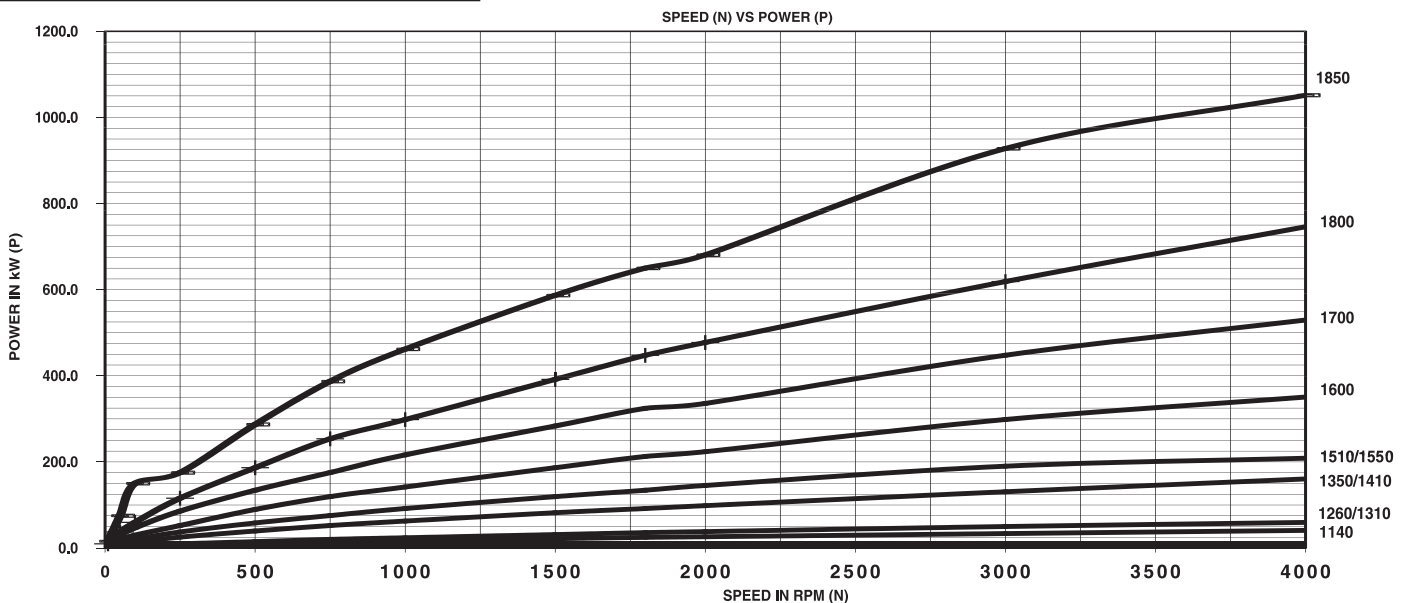
- Locate the coupling size and torque (T) w.r.t. application speed (N) & power rating (P) from enclosed chart or graph.
- Determine appropriate service factor (SF) from service factor table.
- Calculate application maximum torque (TM) using equation.
 $TM = T \times SF$
- Ensure that application maximum torque (TM) is less than short duration torque (Ts) from the table otherwise select next higher size.
- Ensure that maximum bore capacity of Companion or Jumbo flange is more than shaft dia. Otherwise select next higher size.
- If joint angle is more than 3° &/or bearing life required is more than 5000 Hrs. contact RATHI.

SIZE → SPEED ↓	RDC-1140		RDC-1260 / 1310		RDC-1350 / 1410		RDC-1510 / 1550		RDC-1600		RDC-1700		RDC-1800		RDC-1850	
	T	P	T	P	T	P	T	P	T	P	T	P	T	P	T	P
N _i (RPM)	N-m	kW	N-m	kW	N-m	kW	N-m	kW	N-m	kW	N-m	kW	N-m	kW	N-m	kW
10	571	0.6	800	0.8	2100	2.2	3200	3.4	4500	4.7	6500	6.8	9260	9.7	15000	15.7
50	427	2.2	670	3.5	1610	8.4	2279	11.9	3704	19.4	5700	29.8	7123	37.3	14324	75.0
100	356	3.7	513	5.4	1282	13.4	1923	20.1	2849	29.8	4487	47.0	5698	59.7	14324	150.0
250	259	6.8	370	9.7	969	25.4	1425	37.3	1994	52.2	3276	85.8	4416	115.6	6685	175.0
500	199	10.4	285	14.9	755	39.5	1111	58.2	1710	89.5	2564	134.3	3562	186.5	5481	287.0
750	180	14.1	256	20.1	665	52.2	959	75.3	1520	119.4	2232	175.3	3229	253.6	4927	387.0
1000	157	16.4	228	23.9	598	62.6	876	91.7	1353	141.7	2066	216.4	2849	298.3	4412	462.0
1500	138	21.7	199	31.3	522	82.0	760	119.4	1187	186.5	1804	281.4	2493	391.6	3737	587.0
1800	131	24.7	190	35.8	487	91.8	712	134.2	1128	212.6	1721	324.4	2374	447.5	3448	650.0
2000	125	26.2	182	38.1	470	98.4	694	145.4	1068	223.7	1603	335.7	2279	477.3	3250	680.7
3000	107	33.6	159	50.0	416	130.7	605	190.1	950	298.5	1425	447.7	1970	618.9	2953	927.7
4000	98	41.1	142	59.5	383	160.4	498	208.6	837	350.6	1264	529.5	1781	746.0	2510	1051.4

SERVICE FACTOR TABLE:

Light shock loads (continuous loads) Centrifugal pumps, fans, conveyors	1.1 to 1.5
Medium shock loads (Non-continuous loads) Centrifugal pumps & conveyors, printing machinery, small paper & textile machinery, Bar mills.	1.5 to 2
Heavy shock loads Roller tables, Presses, Heavy tube mills, pinch roll, Bending machine, Compressor, marine transmissions	2 to 3
Extra Heavy shock loads Roller tables, cold rolling mills, vibrating conveyors.	3 to 6

Nominal Ratings for smooth load, joint angle 3° per side max., 5000 hrs life at S.F.=1



Coupling Size	1140	1260 / 1310	1350 / 1410	1510 / 1550	1600	1700	1800	1850
Short Duration Torque N-m (Ts)	571	800	2100	3300	4500	8000	13850	15060

- While ordering place order for individual part.
 - All dimensions are in mm unless otherwise specified.
- In view of our constant endeavour to improve quality of our products, we reserve the right to alter or change specifications without prior notice. This document is the intellectual property of Rathi Transpower Pvt. Ltd. and subject to copyright.



Rathi Transpower Pvt Ltd

Rathi Chambers, 7, Deccan College Road,
Pune 411 006.(INDIA)
Phone : 91-20-30517201
Fax : 91-20-30517212
E-mail : enquiry@rathigroup.com
Website : www.rathicouplings.com

Distributor