

### Features -

Polyurethane Sleeve compounds provide excellent torsional vibration dampening; absorb load pulsations and minimize drive line shock. This sleeve design allows the coupling to act as a predictable fuse in the system.

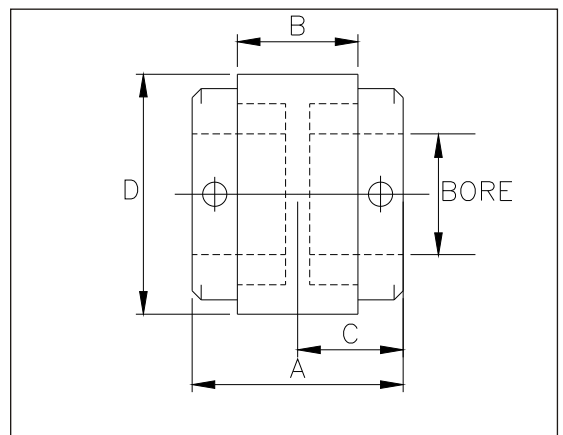
Minimum backlash.

Coupling length can be varied to meet application requirements.

Non-Corrosive metal ends and rubber compounds are not affected by moisture, dirt and abrasives. No lubrication, adjustments or maintenance is required. No metal-to-metal contact even when the coupling shears.

Compact, small diameter coupling with low moment of inertia.

Temperature range from -25 C to +100 C.



### TECHNICAL DATA

Coupling Size	Rated Torque N-m	kW at 100 rpm	Max. Speed rpm	Bore Size		Dimensions			
				Min.	Max.	A	B	C	D
RP-43	13.6	0.14	3500	9.5	22	60.5	40	29	47
RP-56	40.6	0.43	3500	12	30	63.5	40	30	55
RP-66	61.0	0.64	3500	12	35	70	40	33	78.5

- All dimensions are in mm.
- In view of our constant endeavour to improve the quality of our products, we reserve the right to alter or change specifications without prior notice.
- This document is an intellectual property of Rathi Transpower Pvt. Ltd. and subject to copyright.



#### Rathi Transpower Pvt Ltd

Rathi Chambers, 7, Deccan College Road,  
Pune 411 006.  
Phone : 91-20-30517200  
Fax : 91-20-30517212  
E-mail : enquiry@rathigroup.com  
Website : www.rathicouplings.com